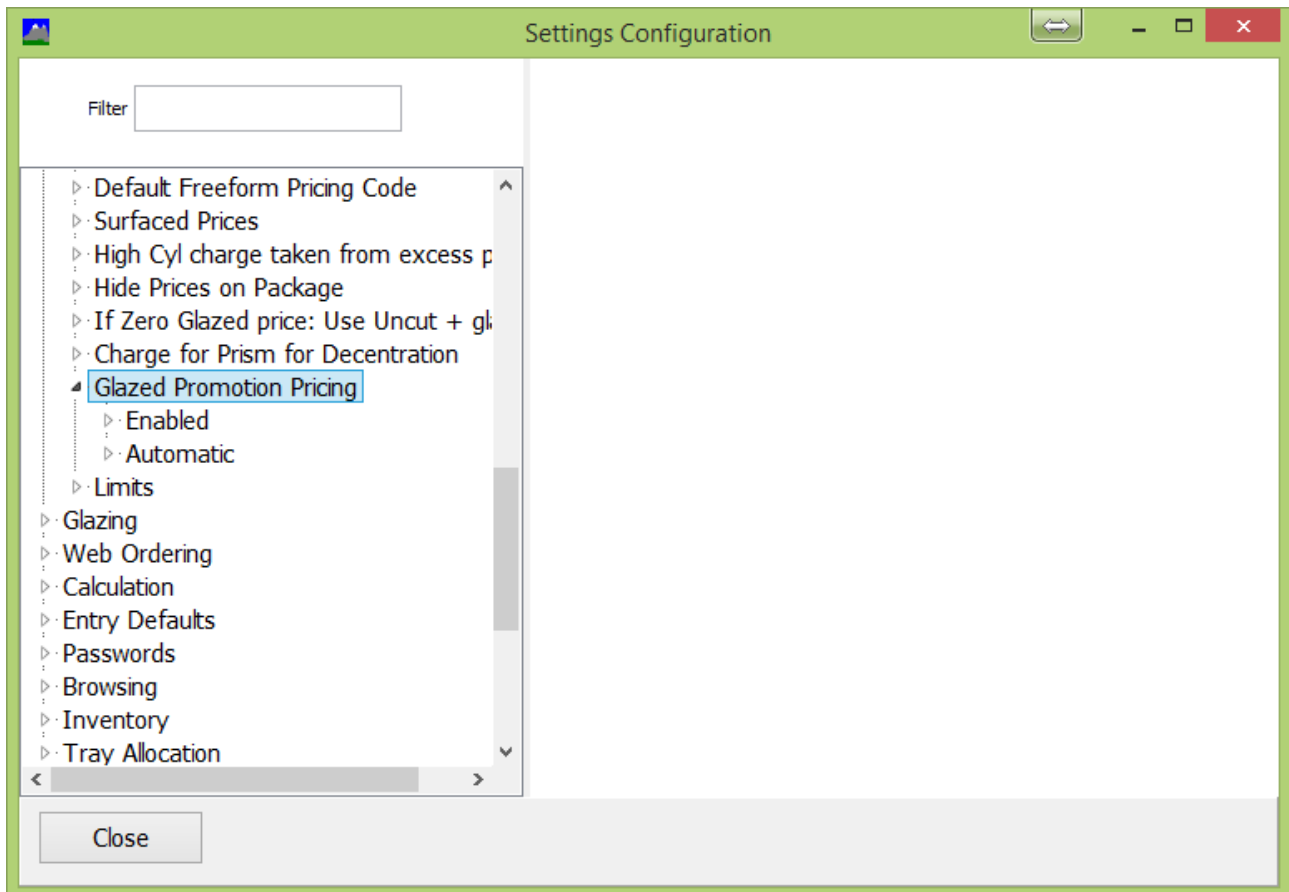


Glazed Promotion Pricing.

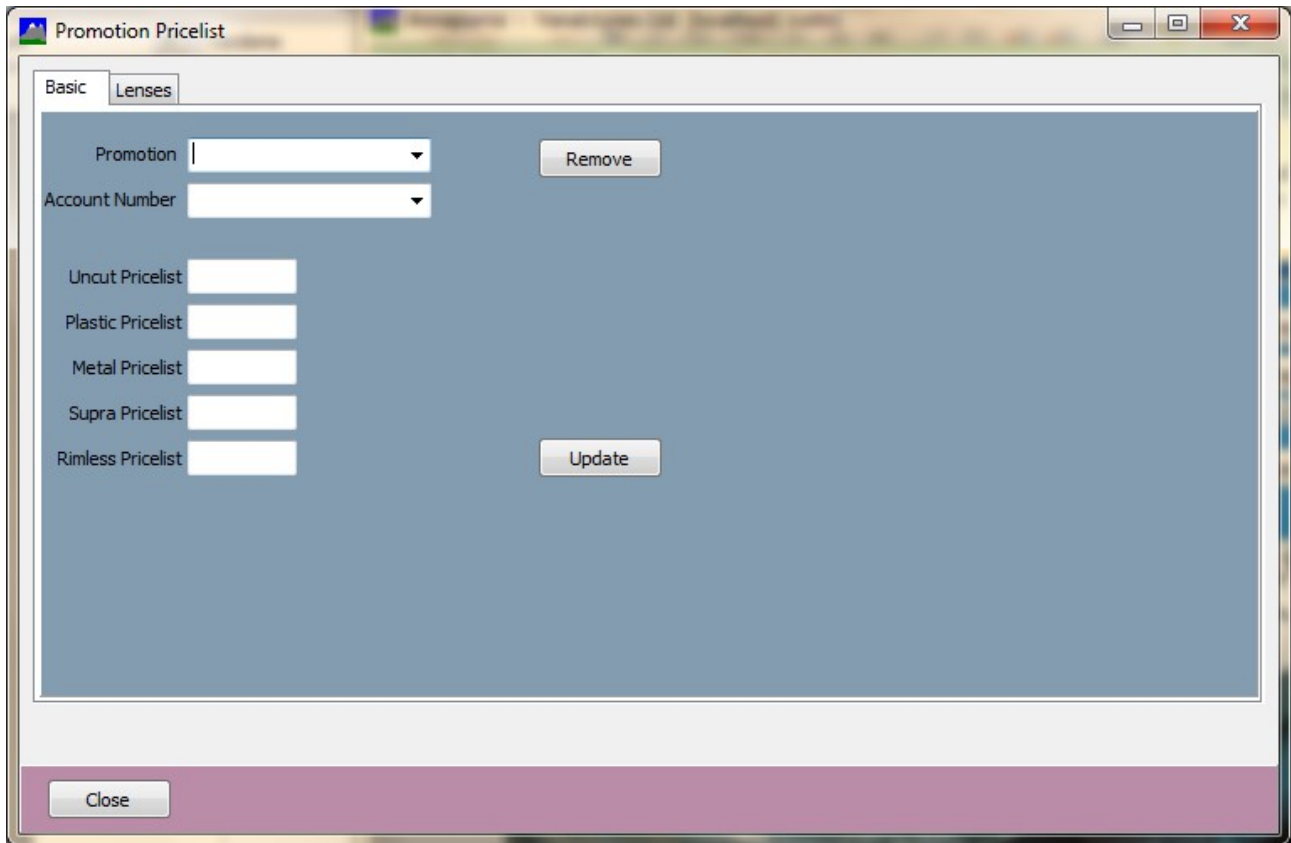
The purpose of this update is to allow the lab to set special glazed deals for lenses glazed into different frame types. For example, a lens glazed into a plastic frame is this price but glazed into a supra is another price. Typically the glazed into the supra is charged at the glazed into the plastic price plus a standard to that customer for glazing into a supra price.

In order to set this up there is a settings parameter under Pricing / Glazed Promotion Pricing.

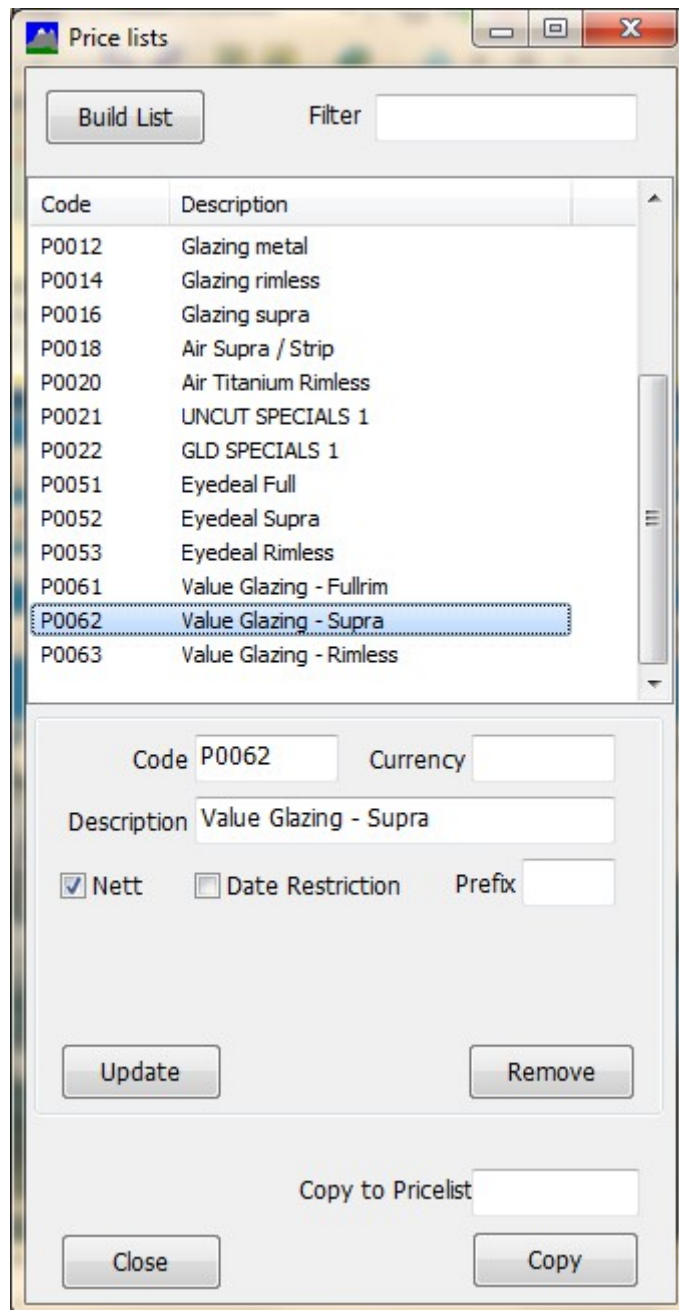


Tick Enabled to enable. By default the promotion pricing will be automatically applied if available (even if a promotion isn't manually selected in order entry). If you wish to prevent this behaviour you need to ensure the Automatic option is unchecked (check / un-check then click update to be sure it is set to false).

When the program is restarted then in Commercial there is now a button for Promotions. When this is ticked the following screen is shown.



Before going further, it is best if you go to the Pricelists screen and set up the names of the pricelists before completing this screen. In the example below, we will set up prices for fullrim glazing, supra and rimless glazing for a promotion called Value Glazing. So the pricelists have been added and marked as Nett pricelist.



Returning to the promotion pricelist screen, the name of the Promotion pricelist is entered into the name field and Update is clicked. It is possible to have a special promotion pricelist for a particular account but we will come back to that later.

We then enter the pricelists associated with each frame type. In our example this will be:

Promotion Pricelist

Basic Lenses

Promotion: VALUE GLAZING [Remove]

Account Number: [Dropdown]

Uncut Pricelist: 0

Plastic Pricelist: 61

Metal Pricelist: 61

Supra Pricelist: 62

Rimless Pricelist: 63 [Update]

Enter Prices for a lens

Lens code: [] Diameter: []

Uncut Price: []

Plastic Price: [] Min Power: []

Metal Price: [] Max Power: []

Supra Price: [] Cyls to: []

Rimless Price: []

[Update]

[Close]

Now we can put prices against the lenses. We can use the regular Annapurna methods to update the prices for a lens but we can also enter the prices directly in this screen.

Promotion Pricelist

Basic Lenses

Promotion: VALUE GLAZING [Remove]

Account Number: [Dropdown]

Uncut Pricelist: 0

Plastic Pricelist: 61

Metal Pricelist: 61

Supra Pricelist: 62

Rimless Pricelist: 63 [Update]

Enter Prices for a lens

Lens code: PSTK Diameter: 70

Uncut Price: []

Plastic Price: 3.00 Min Power: -6

Metal Price: 3.25 Max Power: 6

Supra Price: 5.00 Cyls to: 2

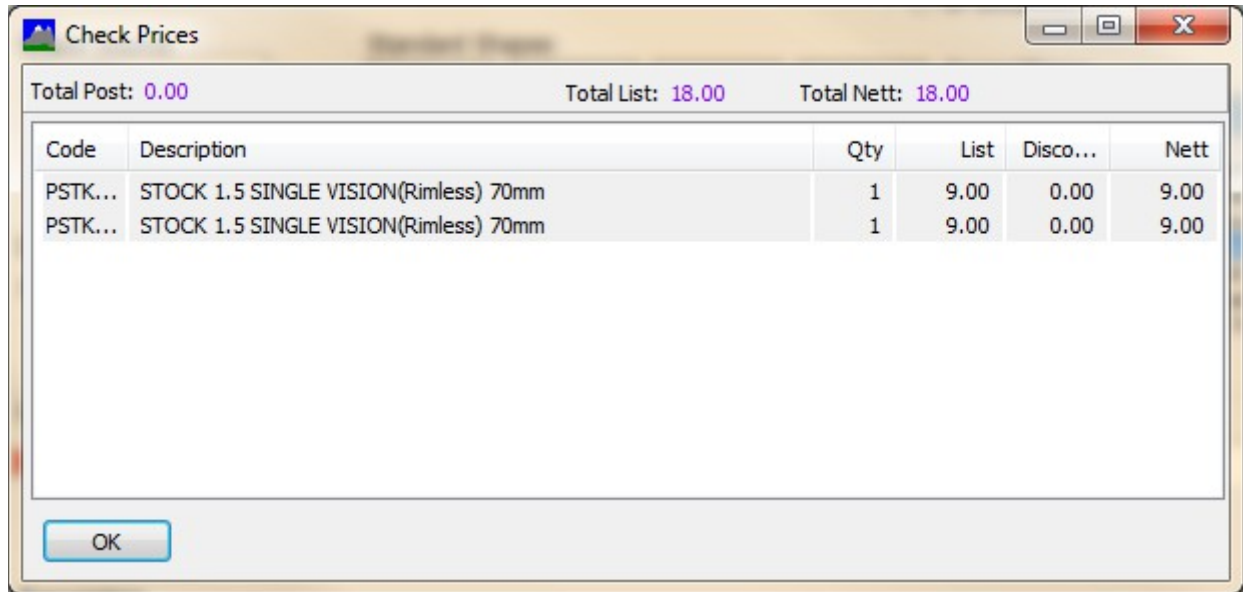
Rimless Price: 9.00

[Update]

[Close]

This will then update the matching pricelist for each frame type.

When a glazed order is entered the promotion price is automatically inserted as the first choice pricelist (unless the automatic option was switched off in the settings as perviously described)
The order is then priced as follows.



Code	Description	Qty	List	Disco...	Nett
PSTK...	STOCK 1.5 SINGLE VISION(Rimless) 70mm	1	9.00	0.00	9.00
PSTK...	STOCK 1.5 SINGLE VISION(Rimless) 70mm	1	9.00	0.00	9.00

Total Post: 0.00 Total List: 18.00 Total Nett: 18.00

OK